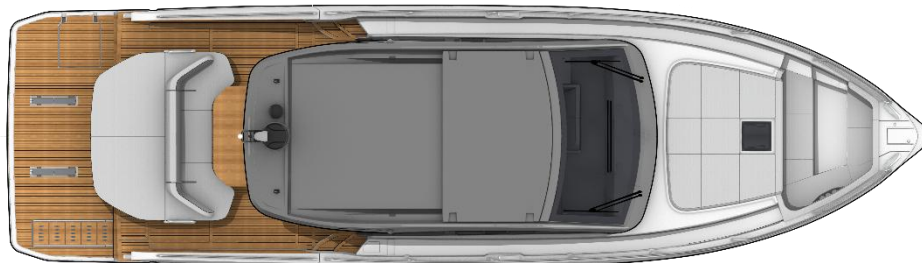


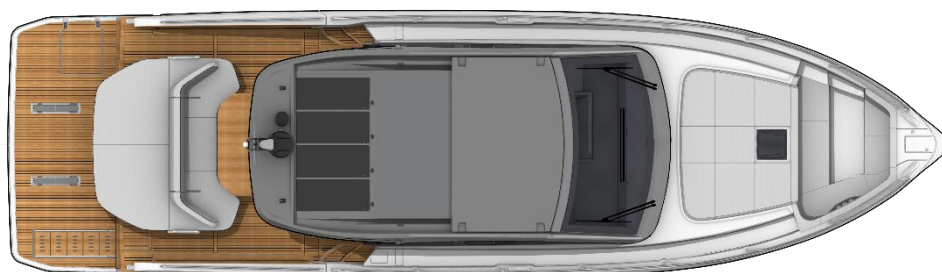
# *Gigan Turismo 50*

Overall length / Longueur hors tout	15,95 m	52'4"
Hull length / Longueur coque	14,1 m	46'3"
Overall beam / Largeur hors tout	4,48 m	14'8"
Beam / Largeur coque	4,44 m	14'7"
Air draft / Tirant d'air*	4,6 m	15'1"
Draught / Tirant d'eau	1,18 m	3'10"
Light displacement / Déplacement lège CE	14 751 kg	32,511 lbs
Fuel capacity / Capacité carburant	2 x 650 L	2 x 172 US Gal
Freshwater capacity / Capacité eau douce	2 x 200 L	2 x 53 US Gal
Hot water heater capacity / Capacité chauffe-eau	60 L	16 US Gal
Accommodation / Couchages	5	
Category EC / Catégorie CE	B10 / C12	
Max engine power / Puissance moteur max	2 x 480 CV - 2 x 480 HP	
Naval Architect / Architecte naval	Dixon Yacht Design	
Design	Andreani Design	

\*inclus support radar / included radar support



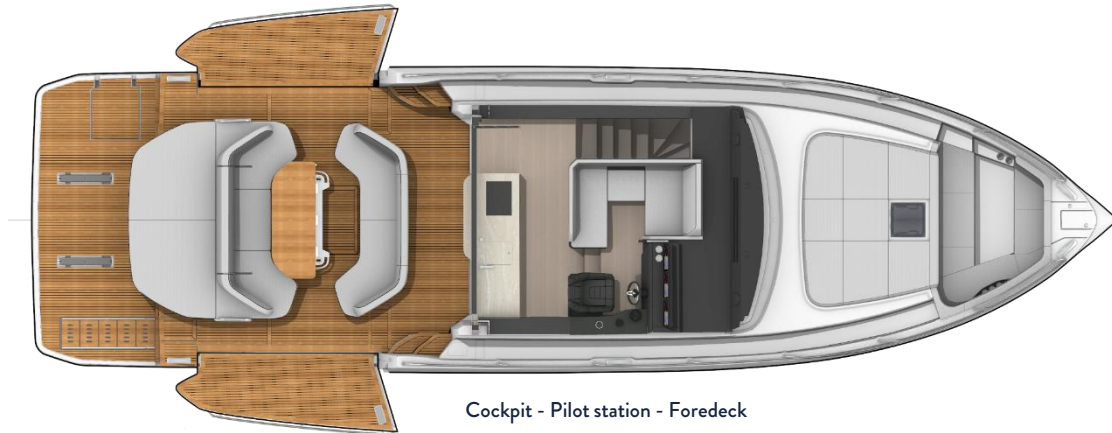
Hard top – Standard



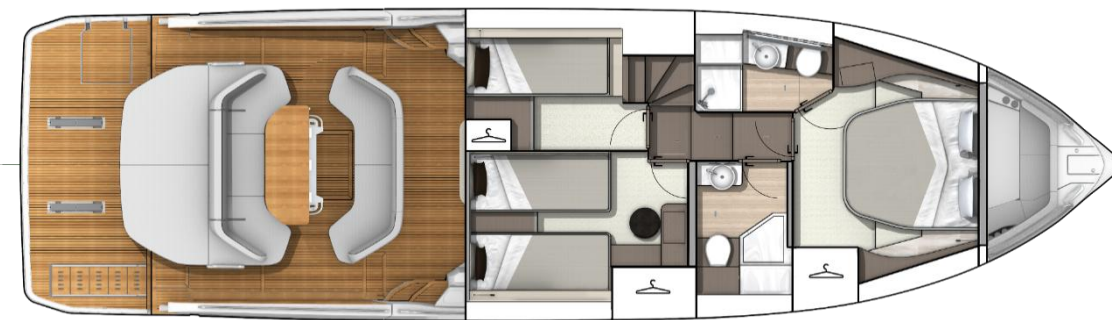
Hard top – Solar panels



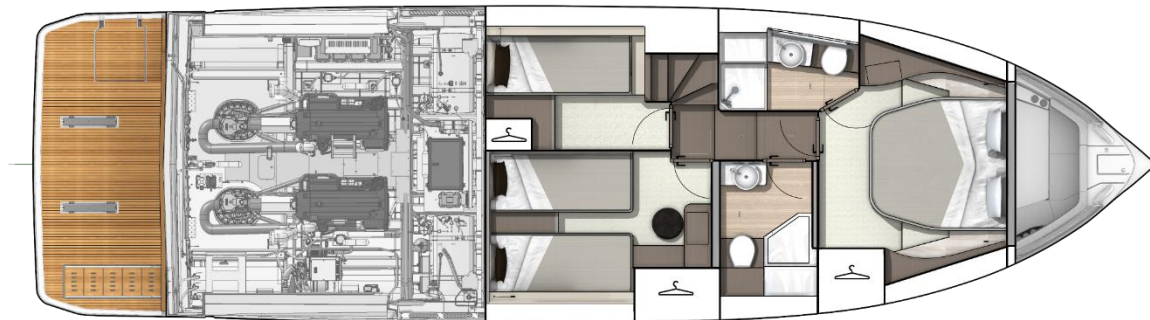
# *Gigan Turismo 50*



Cockpit - Pilot station - Foredeck



Cockpit - Lower deck



Engine room - Lower deck



## ENGLISH / Standard Equipment

### DECK EQUIPMENT

- Cockpit courtesy lighting
- Black navigation lights
- Black radar mast
- Grey hard top with electric sunroof

### MOORING ANCHORING

- Retractable anchor davit with anchor locking system + anchor + chain
- Electric windlass (with remote control) power 2 300 W
- 2 retractable cleats in the bow, 2 in the centre and 2 in the stern in aluminium/titanium

### COCKPIT

- Slatted cockpit
- Wheelhouse glazing + Wheelhouse access door with opening window
- Aft cockpit bench seating facing each other - black gelcoat finish + covers black gelcoat finish + protective covers
- Aft sunbathing area with headrest (folding bench seat back)
- Solid wood folding cockpit table (2 positions) with 4 cup holders + 2 handrails + 2 USB A/C sockets + cover 1 220 V socket under starboard steps
- 1 storage locker (under forward bench seat)
- Removable stainless steel shelf
- Access hatch to engine room
- Storage locker for BIB (under forward bench seat)
- Fixed bathing platform with batten (4, 2 x 1.85 m / 13'9" x 6'1") + Stainless steel swim ladder with wooden steps
- Dinghy garage :  
-Tender (220 cm / 7'3")  
Opening assisted by 2 electric jacks
- 2 slatted side decks with opening assisted by electric jack, handrails
- 2 safety gates

### FOREDECK SUNPAD

- Foredeck sunpad + protective cover
- 5-person U-shaped saloon + 5 cupholders + 2 USB A/C sockets + cover
- Anchor locker with dedicated space for fenders

### INTERIOR PILOT STATION

- Pilot console with engine control and joystick, compass, USB/A/C socket, 2 cup holders
- Sliding pilot seat with Bolster function - black PVC/Alcantara upholstery
- Leather steering wheel
- Footrest in front of pilot seat
- Fusion RA210 + 4 speakers 7, 7" (2 in cockpit + 2 exterior hardtop)
- Anti-reflective screen under windshield in "carbon" color PVC
- Demisting system
- 2 Volvo 2,5" displays
- 2 induction phone chargers
- Windshield with 3 integrated electric wipers
- Horn
- U-shaped co-driver's bench seat matching exterior upholstery + 2 cup holders + 2 USB/A/C sockets

### GALLEY

- Stainless steel sink with black retractable mixer tap
- 2-burner induction hob
- White Corian worktop
- Refrigerator Freezer with drawers 182 L
- 5 Storage drawers
- Waste bins
- 1 microwave
- Furniture lacquered black/matte grey Grigio Bromo
- 2 storage cupboards
- 2 Electrical sockets
- Navicolor control screen
- Electrical battery switch
- Leather handrails
- Grey ceiling canvas
- Lower deck gangway with 2 handrails

### OWNER CABIN (FRONT)

- Double bed
- Mattress with slatted base
- Headboard in wood decor with indirect lighting
- Large storage box under mattress with gas struts
- 1 Wardrobe with shelves
- Space for TV (50")
- Dressing table with backlit mirror and storage space
- 3 electrical outlets
- 2 reading lights with USB/A/C socket
- 2 panoramic windows with opening portholes and blinds
- 1 skylight with blind
- 1 mirror on access door to ensuite head
- White ceiling canva
- Beige carpet
- Direct and indirect lighting

### EN SUITE HEAD (PORTSIDE)

- Sink with mixer tap
- Backlit mirror
- 1 storage cupboard with 2 shelves
- 1 open niche with 1 electrical socket
- 2 opening portholes
- Separate shower with integrated seat and rain shower
- White Corian shower base
- LUXE electric WC
- 2 glass cup holders
- 2 hooks

### VIP CABIN (REAR STARBOARD)

- 2 single beds
- Mattress with slatted base
- 1 additional double bed
- 2 reading lights with USB/A/C socket
- 2 additional USB/A/C sockets
- 1 bedside cabinet with drawer
- 1 closet with 2 shelves
- 1 desk with integrated dressing table
- 1 hull window with integrated opening porthole
- 2 electrical sockets
- Direct and indirect lighting
- Space for television (32")
- Beige carpet

### THIRD CABIN (REAR PORTSIDE)

- 1 single bed
- Mattress with slatted base
- 1 reading light with USB/A/C socket
- 1 wardrobe
- 1 bedside cabinet with drawer
- 2 electrical sockets
- 1 hull glazing with integrated opening porthole
- Direct and indirect lighting
- Beige carpet

### DAY HEAD (STARBOARD)

- Sink with mixer tap
- Backlit mirror
- 1 storage cupboard with 2 shelves
- 1 storage column with 2 shelves
- 1 electrical socket
- 2 opening portholes
- Separate shower White Corian shower base
- WC electric LUXE
- 2 cup holders
- 2 hooks

### MOTORISATION

- Motorisation Volvo Diesel D6 IPS 650 2 x 480 CV + JOYSTICK DOCKING (2 écran Volvo 2,5")
- Motorisation Volvo Diesel D6 IPS 650 2 x 480 CV + JOYSTICK DRIVING (1 écran Volvo 7")
- Motorisation Volvo Diesel D6 IPS 650 2 x 480 CV + Active Corrosion protection + JOYSTICK DOCKING (2 screens Volvo 2, 5") **US ONLY**
- Engine Volvo Diesel D6 IPS 650 2 x 480 HP + Active Corrosion protection + JOYSTICK DRIVING (1 screen Volvo 7") **US ONLY**
- Electronic engine controls
- Fuel filter with decanter
- Engine-integrated seawater filter
- Air intakes on deck for engine hold cooling
- Engine room insulated with soundproofing foam
- Stainless steel fuel fittings
- 2 Aluminum fuel tanks, capacity 650 L / 172 US Gal each
- Electric power steering
- Volvo IPS : Trip computer, Cruise control, Single lever, Low speed
- Active Corrosion Protection System: electronic anode **US ONLY**

### ELECTRICITY

- 4 Engine batteries (12 V - 120 Ah) + 4 AGM service batteries (12 V - 140 Ah)
- 1 Fire extinguisher
- Charge distributor
- Battery charger (24V - 100Ah)
- Interior 220 V sockets
- Shore power socket (220 V - 63Ah)
- LED spotlights and reading lights
- TV antenna
- Manual shore power extension lead (15 m)



# Gigan Turismo 50

## ENGLISH / Standard Equipment

### PLUMBING

- Fresh-water tanks (2 x 200 L / 53 US Gal)
- Rigid black-water tank (120 L / 32 US Gal)
- Grey-water tank (45L / 12 US Gal) with automatic discharge
- Stainless-steel water hose
- Dockside fresh-water outlet
- Water unit for pressurizing hot/cold water system
- Water heater 60 L / 16 US Gal
- 2 Bilge pumps :
- 1 Electric bilge pump on transom (90 L / 24 US Gal /minute)
- 1 Manual bilge pump under starboard catwalk (30 L / 8 US Gal /minute)

### SMART BOARD

SEANAPPS<sup>®</sup> connected technology:  
Allows you to monitor your boat's condition and receive alerts and maintenance recommendations via the associated mobile application.  
The type of information collected (GPS position, batteries, engine info, navigation data, etc.) varies according to boat configuration.

## ENGLISH / Optional equipment

### INTERIOR LAYOUT / ONBOARD COMFORT

- Reversible water chilled air conditioning (230 V - 50 Hz - 48 000 BTU)
- Table art kit - 6 persons
- Wine cellar - 12 bottles
- Ice maker
- Safe
- Porthole mosquitos screens

### WATER SYSTEMS

- Grey water tank 245L / 65 US gal deck drain only (with fresh water capacity reduction 200L/53 US Gal instead of 400L/106 US Gal)

### ELECTRICITY

- Cablemaster system 230 V/50 Hz (15 m - 63 Ah) shore power extension
- Cablemaster system 230 V/50 Hz (15 m - 63 Ah) shore power extension for air conditioning
- Generator (12.8 KVA 230 V / 50 Hz)
- TV prewiring (50") in hard top

### NAVIGATION ELECTRONICS

- Garmin Fantom 18X Radar Black
- Garmin map
- Garmin Auto Pilot
- Garmin Virtual Anchor
- Assisted docking Garmin

### CONSTRUCTION

- White infused hull - inverted bow
- Composition: Sandwich (Vinylester resin - Fiberglass - Balsa core)
- Infused hull with counter mould
- Infused deck with counter mould
- 12 Opening portholes

### MISCELLANEOUS ITEMS

- Smoke detector
- Owner's manual

### ENGINE

- Proportional bow thruster
- Gyroscopic stabilizer SK6
- Automatic fire extinguisher in engine compartment
- Fuel tanks (2 x 930 L / 2 x 246 US Gal)
- Automatic flaps zipwakes

### EXTERIOR OPTIONS

- Mooring kit (mooring lines + fenders)
- Carbon folding gangway
- Dinghy inflator/deflator
- Exterior wheelhouse window curtains Solstis black and interior venetian blinds on patio door
- Self-supporting hardtop cap Graphite
- Aft cockpit closing kit Graphite
- Sun awning for cockpit + balconies Solstis black
- Sun awning for foredeck Solstis black
- Kenyon mobile barbecue
- Irodeck on foredeck
- Awl Grip metallic hull paint

#### ALPINE VERSION ONLY:

Hull + foredeck + bulwark + Abyss dark blue glazing screen-printed  
Hull + foredeck + bulwark + Vision Alpine blue glazing screen-printed

## TRIM LEVELS

	Essential	Comfort	Lounge
Pre wiring for generator	X	X	X
Pre wiring for air conditioning	X	X	X
Garmin 16" screen + Sounder	X	X	X
Garmin map	X	X	X
Sliding windows in wheelhouse	X	X	X
Ship Control	X	X	X
Inverter 24V 2000 KVA	X	X	X
Cockpit shower	X	X	X
Deck wash pump for anchor locker	X	X	X
Lenco flaps	X	X	X
LED deck searchlight and rear spotlights		X	X
Hydraulic swim platform with steps, integrated tender supports and removable ladder (max. weight: 400 kg / 882 lbs)		X	X
12.8 KVA Generator		X	X
Dishwasher 6 place settings			X
Additional outdoor refrigerator 75L / 20 US Gal			X
Villeroy & Bosch crockery set 6 place settings (glasses, cutlery and crockery)			X



# *Gran Turismo 50*

## ATMOSPHERE

	Standard	Option
<b>Interior woods</b> <ul style="list-style-type: none"> <li>Walnut Grey</li> <li>Laminate Lindberg Cross-Cut Oak</li> <li>Flooring Oak Brush Bleached</li> </ul>	X X	X
<b>Cabins carpet</b> <ul style="list-style-type: none"> <li>Skye 03</li> </ul>	X	
<b>Upholstery (exterior + wheelhouse)</b> <ul style="list-style-type: none"> <li>Linetex Chalk</li> <li>Crevin Strada 07</li> </ul>	X	X
<b>Others</b> <ul style="list-style-type: none"> <li>Pilot seat (leather + Alcantara black)</li> <li>White hull</li> <li>Hard top Signal grey RA7004</li> <li>Metallic hull paint</li> </ul>	X X X	X

## ALPINE VERSION

- Blue vinyl furniture top (owner's cabin + guest cabin)
- Sentiment 95 carpets in cabins
- Black fittings + washbasin + Corian in the 2 shower rooms
- Black door handles + pushlock (furniture)
- Interior/exterior handrails, balconies, table legs, cup holders, black access doors and liston (PVC)
- Corian in black kitchen
- Kitchen furniture lacquered black RAL 9005
- Pilot console in black carbon + Alpine decoration
- Black exterior popup cleats replacing standard titanium aluminum popup cleats
- Hardtop black Alpine decoration on black hardtop + Alpine logos (hardtop, side platforms, pilot console)
- Linetex Sphere Blue / Tannery light Sugar pilot seat + Alpine logo
- Linetex Sphere Blue / Tannery light Sugar / interior upholstery with Alpine embroidery
- Flip up backrests for foredeck sunpad
- Steering wheel with Alpine Isotta Fanete Exo Alcantara color and Tannery light Sugar stripe
- Black spotlights and courtesy lighting

## PACKS

### ELECTRONIC PACK PREMIUM

- 2 ADDITIONAL SCREENS 16" GARMIN 1623 XSV GPSMAP
- REAR CAMERA GARMIN GC245
- RECEIVER AIS 800 GARMIN
- VHF GARMIN 315I

### ENTERTAINMENT PACK OWNER CABIN

- FUSION APOLLO RA670 + 2 SPEAKERS (6.5")
- TV PRE WIRING (50") + SOCKET + ANTENNA SOCKET

### ENTERTAINMENT PACK VIP CABIN

- FUSION APOLLO RA670 + 2 SPEAKERS (6.5")
- TV PREWIRING (32") + SOCKET + ANTENNA SOCKET

### SILENT BOAT PACK

- 4 SOLAR PANELS (TOTAL : 520 Wp)
- 4 LITHIUM BATTERIES (200 Ah - 24V)
- INVERTERS 5000 KVA + 8000 KVA (24V)

### LIGHT AND SOUND PACK

- APOLLO RA 770 FUSION + 6 SPEAKERS 3I SERIES (7.7") + RGBW SUBWOOFER
- LUMISHORE INDIRECT LIGHTING HULL AND PILOT STATION
- LUMISHORE INDIRECT LIGHTING COCKPIT
- UNDERWATER LIGHTS



BENETEAU - Vendéopôle - 2 rue du Grand Large - CS82531 GIVRAND - 85805 SAINT GILLES CROIX DE VIE - FRANCE.

Siège social : SPBI - BP 45 - 85170 DOMPIERRE SUR YON

Descriptions, illustrations, etc are provided only for your guidance.

Our models may undergo some standard modifications or improvements without notice.

MAY 2026