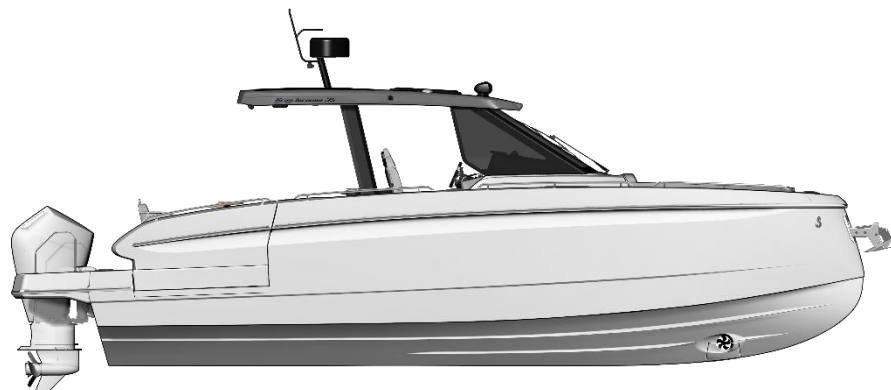


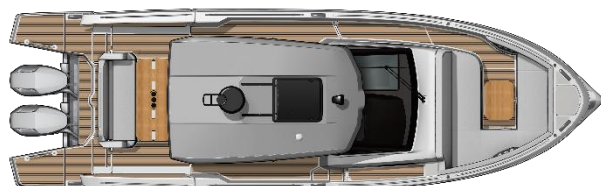
Ocean Turismo 35

Overall length / Longueur hors tout	11,20m	36'9"
Hull length / Longueur coque	9,78m	32'1"
Overall beam / Largeur coque	3,24m	10'8"
Overall beam + open side terraces / Largeur de coque + terrasses latérales ouvertes	4,65m	15'3"
Air draft / Tirant d'air*	4,26m	13'12"
Draught / Tirant d'eau	1,09m	3'7"
Light displacement / Déplacement léger CE	5,336 kg	11 761 lbs
Fuel capacity / Capacité carburant	2 x 370 L	2 x 98 US GAL
Freshwater capacity / Capacité eau douce	160 L	42 US GAL
Hot water heater capacity / Capacité chauffe-eau	25 L	7 US GAL
Accommodation / Couchages	2	
Category EC / Catégorie CE	B8 / C10	
Max engine power / Puissance moteur max	2 x 350 CV / HP	
Naval Architect / Architecte naval	BENETEAU / MICHAEL PETERS YACHT DESIGN	
Design	ANDREANI DESIGN	

*inclus support radar / included radar support



Profil - OB



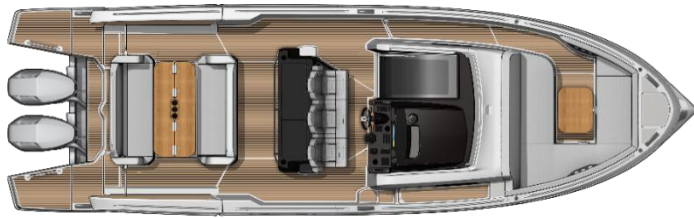
Hard top - Standard



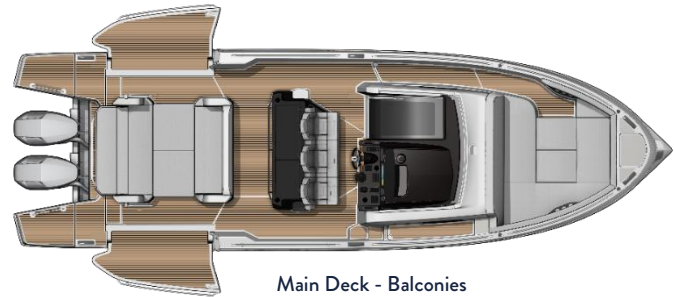
Hard top - Solar panels



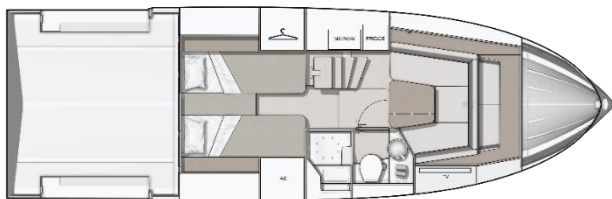
Alan Turismo 35



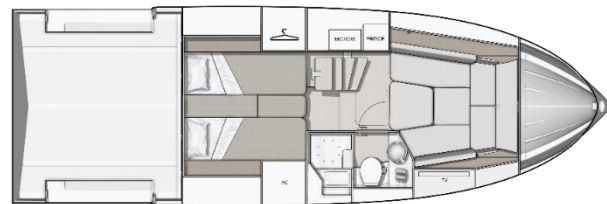
Main Deck



Main Deck - Balconies



Lower deck – Salon



Lower deck – Cabin

ENGLISH / Standard Equipment

DECK EQUIPMENT

- Courtesy lighting in the cockpit
- Black navigation lights

MOORING ANCHORING

- 2 front, 2 centre and 2 rear aluminium/titanium cleats

COCKPIT

- Solid wood folding cockpit table on 2 electric telescopic legs, with 3 cup holders + 1 handrail + protective cover
- Forward bench seat with swivel backrest and armrests + protective cover
- Aft cockpit bench seat with folding backrest for conversion into sunbathing area + protective cover
- Sunbathing mattress in chosen upholstery
- Storage compartment for BIB (under forward bench seat)
- 1 storage locker (under aft bench seat)
- Access hatch to technical hold
- 2 Side decks with electrically assisted opening and handrails
- 2 safety gates
- 2 aft side platforms (0,91 x 0,67m / 3' x 2'2") with 2 handrails and folding bathing ladder on port side
- 1 cross step basin

HARD-TOP

- Grey hard top with manual sunroof
- Black radar bracket
- Black aluminium hard top base LED lighting
- Anthracite grey padded ceilings
- 2 rear spotlights
- LED front spotlight
- 2 LED rear spotlights
- White Mercury GPS antenna

FRONT DECK

- U-shaped salon + 6 cup holders + protective cover
- Removable wooden table
- Sunbathing mattress according to chosen upholstery
- Starboard hatch under forward starboard seat for gas box
- Access to anchor locker under forward seat
- Anchor locker with dedicated space for fenders

PILOT STATION

- Pilot console with engine controls, 2 handrails, compass, 1 USB/A/C socket, 2 cupholders and pocket
- Black PMMA console panel with black cap
- Glass front windscreen with 1 integrated electric wiper
- Glass side windows with black frame
- Pilot bench seat 3 fixed seats with Bolster function matching exterior upholstery + 1 cupholder
- 2 spaces under bench seat for fire extinguisher (not supplied)
- Leather steering wheel
- Footrest for wooden pilot seat
- Wooden folding pedestal
- 1 Mercury Vessel View (704) engine screen
- 1 induction charger

Access to lower deck

- Steps on stainless steel structure with backlighting
- 1 grey leather-covered handrail
- 1 niche with bottle storage
- 1 opening deck hatch with blackout curtain
- 1 space for microwave (optional)
- 1 space for fridge (optional)

SALON / CABIN (FRONT)

- Salon convertible into double bed (2,10m x 1,40m min – 1,65m max / 6'9" x 4'6" - min 5'4" max)
- Wood foldable table on telescopic leg
- Storage and technical access under seats and backrests
- Shelves
- 2 USB sockets
- 1 panoramic window with opening porthole and blackout curtain
- 1 mirror on access door to head
- Direct and indirect lighting



ENGLISH / Standard equipment

EXTERIOR GALLEY

- Black polyester furniture with black PMMA doors and stainless steel latches
- Black Corian worktop
- Black polyester sink with swivel mixer tap
- 2-burner gas hob
- Refrigerator 49 L
- 2 drawers and a storage shelf
- Waste bins
- 1 leather-covered handrail
- LED ceiling lighting

DAY HEAD (STARBOARD)

- Basin with mixer tap
- Backlit mirror
- 1 storage unit with drawer and toilet roll holder
- 1 opening porthole with private screen
- Separate shower with PMMA doors, integrated seat, shower column and storage
- Shower base in Venaro white corian
- Quiet Flush electric WC
- 2 glass cup holders
- 1 hook
- Direct and indirect light

MID CABIN REAR

- Wood-panelled headboard with indirect lighting
- 2 single berths convertible into a double berth with additional cushions
- 2 reading lights with USB/A/C sockets
- 2 wardrobes with shelves
- 1 storage locker on port side
- Technical access on starboard side with integrated lighting
- Indirect lighting

MOTORISATION

- Mercury Verado V8 2 x 300 HP engine (Europe only)
- Mercury Verado V10 2 x 350 HP engine + Joystick (Europe and US)
- ALPINE S version: Mercury Verado V10 2 x 400 HP engine + Joystick (Europe and US)
- Electronic engine controls
- Fuel filter
- 2 fuel tanks Europe: 2 rotomoulded fuel tanks, capacity 370L / 99 US Gal each
- V8: Hydro-electric power steering
- V10: Electric power steering E-STEER

PLUMBING

- Fresh water tanks (160 L / 42 US Gal)
- Rigid black water tank (80 L / 21 US Gal)
- Water filler
- Water generator for pressurising the water system
- Grey water drainage pump
- Automatic shower
- Cockpit shower
- 3 Bilge pumps:
2 Electric bilge pumps (75 L / 20 US Gal / minute)
1 Manual bilge pump on port side catwalk

ELECTRICITY

- Battery installation (**Batteries not included**, sold separately by the dealer) : service batteries : 2x95 Ah + engine batteries : 2x95 Ah
- Electrical panel under transparent PMMA with 1 Navicolor 3.5" screen, on-board switches and switches

CONSTRUCTION

- White hull - inverted bow
- Composition: Sandwich (Polyester resin - Glass fibre - Balsa core)
- Hull infujection process with counter mould
- Deck contact process with counter mould

SMART BOARD

SEANAPPS® connected technology:
Allows you to monitor the condition of your boat and receive alerts and maintenance recommendations via the associated mobile application.
The type of information collected (GPS position, batteries, engine information, navigation data, etc.) varies according to the configuration of the boat.

MISCELLANEOUS ITEMS

- Indoor carbon monoxide detector
- Owner's manual

STANDARD US

- Ceramic hob (replaces gas hob) exterior
- 2 EPA CARB aluminium fuel tanks, capacity 413L / 109 US Gal each
- 110V sockets
- Electric system with shore power and battery charger

TRIM LEVELS

	Comfort	Lounge
Proportional bow thruster	X	X
Water heater 25L / 7 US Gal	X	X
Electrical system with shore power + chargers	X	X
Courtesy lighting Lumishore LED RGBW (cockpit and foredeck)	X	X
Flaps Lenco	X	X
Garmin GPSMAP 1223 XSV + GT12 TH sensor (cartography not included)	X	X
Additional interior refrigerator 49L / 13 US Gal		X
Microwave oven		X



ATMOSPHERE

	Standard	Option
Interior woods <ul style="list-style-type: none"> Walnut Grey Laminate Lindberg Cross-Cut Oak 	X X	
Exterior upholstery + pilot station <ul style="list-style-type: none"> Linetex Chalk Crevin Strada 07 	X	X
Interior upholstery <ul style="list-style-type: none"> Crevin Club 5 Crevin Onix 05 	X	X
Others <ul style="list-style-type: none"> Hull gelcoat White RAL 9016 Hull gelcoat Signal Grey RAL 7004 Hardtop gelcoat Signal Grey RAL 7004 	X	X X

Packs

ELECTRONIC PACK PREMIUM

- 16" GARMIN GPSMAP 1623 XSV SCREEN (replaces GPSMAP 1223 XSV) (cartography not included)
- GARMIN 315I VHF

SILENT BOAT PACK

- 2 SOLAR PANELS (TOTAL : 320 Wp)
- 3 LITHIUM BATTERIES (330 Ah - 12V)
- 3KVA INVERTER (12V)

SOUND PACK

- FUSION APOLLO RA 210 + 6 SPEAKERS XS (6,5") OUTDOOR + 2 SPEAKERS XS (6,5") INDOOR

LIGHT AND SOUND PACK

- FUSION APOLLO RA 670 + AMP + 6 SPEAKERS 3I SERIES (7,7") OUTDOOR + SUBWOOFER (10") + 2 SPEAKERS XS (6,5") INDOOR
- INDIRECT LIGHTING LUMISHORE LED RGBW ON HULL
- UNDERWATER LIGHTS RGBW

ALPINE VERSION

- Signal Grey RAL 7004 gelcoat hull and black hardtop with Alpine decoration
- Black Mercury engines
- Black taps + washbasin + corian furniture top in the shower room
- Black door handles + pushlock (furniture)
- Black interior/exterior handrails, cup holders, access gates and liston (PVC)
- Black carbon screen supports and pilot console top
- limited edition plaque on console
- Black exterior popup cleats replacing standard titanium aluminium popup cleats
- Linetex Sphere Blue / Tannery Light Sugar driver's seat + Alpine logo
- Linetex Sphere Blue + Tannery Light Sugar exterior upholstery with Alpine embroidery
- Steering wheel with Alpine Isotta Fanete logo Linetex Sphere Blue and Tannery Light Sugar stripe
- Black interior and courtesy spotlights

ENGLISH / Optional equipment

INTERIOR LAYOUT / ONBOARD COMFORT

- Ceramic hob (replaces gas hob) exterior
- Kenyon Grill exterior
- Reversible air conditioning (16,000 BTU) on Victron battery (batteries and converter as separate options)
- Reversible air conditioning (16,000 BTU) on Generator (generator as separate option)
- Outdoor cooler at pilot station (requires air conditioning)
- Tableware kit - 6 people

ELECTRICITY

- Black TV antenna
- 32" TV pre-mount in square
- Garmin Fantom 18X Radar
- Black Horn
- Garmin AIS 800 Receiver

WATER SYSTEMS

- Dockside freshwater outlet

ELECTRICITY

- Generator (4.8 KVA)
- Solar panels (2 x 160 W)
- Deck searchlight

ENGINE

- EPA fuel tanks (2 x 413 L / 2 x 109 US Gal) replacing standard tanks (only available for US area)
- 2 x 50Ah bow thruster batteries
- Automatic zipwakes flaps (replacing Lenco flaps)
- Seakeeper Sk2 stabiliser

EXTERIOR OPTIONS

- Trailer hook
- Telescopic bow roller
- Mooring and mooring kit (Delta anchor 16Kg steel)
- Mooring and mooring kit (Delta anchor 16Kg stainless steel)
- Graphite telescopic hardtop extension (aft cockpit shade)
- Graphite aft cockpit closing kit
- Sun awning for foredeck cockpit Soltis black with 4 masts
- Sun awning for cockpit Soltis black with 2 masts (not compatible with hardtop extension)
- Black console cover
- Black leaning post cover
- Black galley cover
- Wooden slatted deck
- Stainless steel water-ski pole
- Removable gangway
- Opening electric roof hatch

BENETEAU - Vendéopôle - 2 rue du Grand Large - CS82531 GIVRAND - 85805 SAINT GILLES CROIX DE VIE - FRANCE.

Siège social : SPBI - BP 45 - 85170 DOMPIERRE SUR YON

Descriptions, illustrations, etc are provided only for your guidance. Our models may undergo some standard modifications or improvements without notice.

APRIL 2026

